

A VIOLATION OF THE LAW FOR ANY PERSON, UNLESS ACTING UNDER THE DIRECTION OF A LICENSED ARCHITECT TO ALTER THESE PLANS AND SPECIFICATIONS. THIS DOCUMENT CONTAINS PROPERTY INFORMATION AND SHALL NOT BE USED OR REPRODUCED OR ITS CONTENTS DISCLOSED, IN WHOLE OR IN PART, WITHOUT THE PRIOR WRITTEN CONSENT OF GALLO HERBERT ARCHITECTS ARCHITECT. COPYRIGHT 2018 GALLO HERBERT ARCHITECTS

1. ALL FIRE ALARMS, EMERGENCY LIGHTS, SIGNALS, SMOKE DETECTORS, PULL STATIONS, HORNS, DUCT DETECTORS, AND FIRE EXTINGUISHERS SHALL BE INSTALLED AS REQUIRED BY FBC. FINAL LOCATION TO BE APPROVED BY ARCHITECT.
2. LIFE SAFETY ITEMS REQUIRED BY CODE BUT NOT SHOWN ON DRAWINGS SHALL BE PROVIDED BY GC AT NO ADDITIONAL COST.
3. ALL FLOORING MATERIAL SHALL BE NON-SLIP.
4. ALL FIRE RATED OR SMOKE PROOF WALLS AND PARTITIONS SHALL BE IDENTIFIED AT CEILING AS PER FBC SECTION 712.5 "FIRE AND SMOKE BARRIER PROTECT ALL OPENINGS".
5. ALL CLOTHES DRYER SHALL HAVE BLOWERS AS REQUIRED IN ORDER TO PREVENT LINT FIRES.
6. 1/2" MAX. THRESHOLD @ ALL EGRESS DOORS.
7. FIRE EXTINGUISHER SHALL BE PLACED AS REQ. THROUGHOUT BUILDING. ENSURE THAT ALL SURFACE MOUNTED FEC ARE LOCATED NO HIGHER THEN 27" AFF. MEASURED FROM THE BOTTOM EDGE OF THE CABINET. FIRE PROTECTION SUBCONTRACTOR SHALL SUBMIT VIA SHOP DRAWING PROPOSED TYPE AND LAYOUT FOR PORTABLE FIRE EXTINGUISHERS MEETING ALL REQUIREMENTS OF NFPA 10, NFPA 101 AND THE FBC.
8. POSTING OF OCCUPANT LOAD. EVERY ROOM OR SPACE THAT IS AN ASSEMBLY OCCUPANCY SHALL HAVE THE OCCUPANT LOAD OF THE ROOM OR SPACE POSTED IN A CONSPICUOUS PLACE, NEAR THE MAIN EXIT OR EXIT ACCESS DOORWAY FROM THE ROOM OR SPACE. POSTED SIGNS SHALL BE OF AN APPROVED LEGIBLE PERMANENT DESIGN AND SHALL BE MAINTAINED BY THE OWNER OR AUTHORIZED AGENT.
9. PROVIDE PANIC HARDWARE @ ALL STAIR DISCHARGE (TYP).
10. PROVIDE KEY ACCESS TO ROOF & KEY LESS RE-ENTRY FROM ROOF.

COMMON AREA BUILDING

1. COMMON PATH = 50'-0"
2. EXIT ACCESS TRAVEL DISTANCE = 325'-0"
3. DEAD END CORRIDOR = 50'-0"

DWELING UNITS

- MAXIMUM OCCUPANT LOAD = 6
- MAXIMUM EXIT ACCESS TRAVEL DISTANCE = 75'-0"
- DEAD END CORRIDOR = 50'-0"

MINIMUM CORRIDOR WIDTH

1. CORRIDOR = 44" MINIMUM
2. DWELLING UNIT = 36" MINIMUM

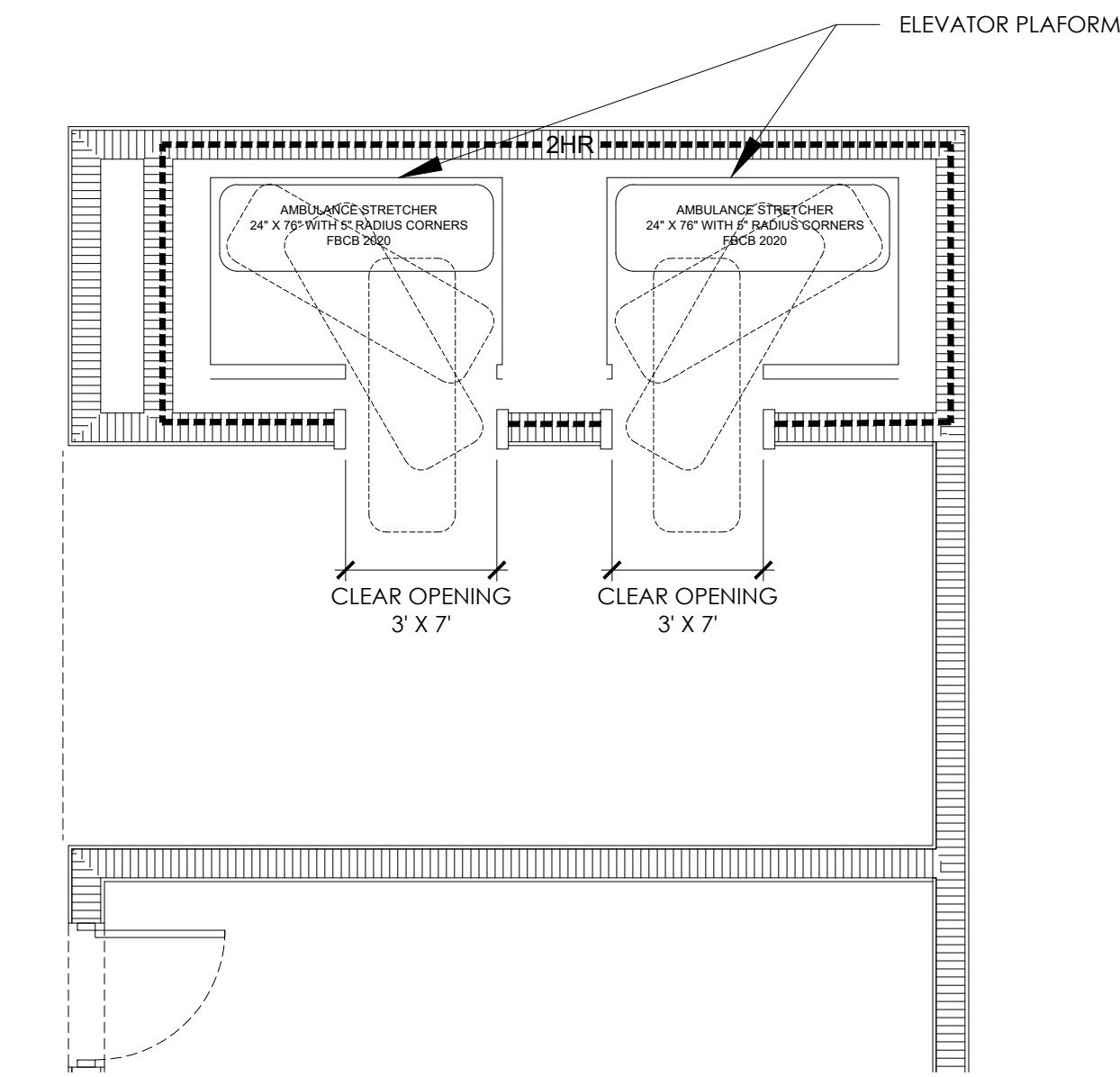
SEE AREA CALCULATIONS ON G-001 CODE DATA.

SEE A-603 FOR EGRESS CLASS OF FINISHES

LIFE SAFETY NOTES

ELEVATOR CAR TO ACCOMMODATE
AMBULANCE STRETCHER

1/4" = 1'-0"



LIFE SAFETY SYMBOL LEGEND

Mark	Description
-----1HR-----	1 - HOUR FIRE RATED WALL
-----2HR-----	2 - HOUR FIRE RATED WALL
● - - - - ->	DIRECTION OF TRAVEL
⬆ ⬇ ⬆	ILLUMINATED EXIT SIGN DIRECTIONAL INDICATOR / NO MORE THAN 100' APART FBC 1030
FE	PORTABLE FIRE EXTINGUISHER 2A: 10B: C TYPE, SEMI-RECESSED MOUNTED @ 4'-6" A.F.F. INSTALLED IN SEMI-RECESSED CABINET W/4" MAX. PROJECTION FROM WALL
KB	FIRE DEPARTMENT KNOX BOX PER CITY SPEC
AED	AUTOMATIC EXTERNAL DESFIBRILLATOR 1st,3rd, 5th & 7th FLOORS
SBK	STOP THE BLEED KIT 1st,3rd, 5th & 7th FLOORS

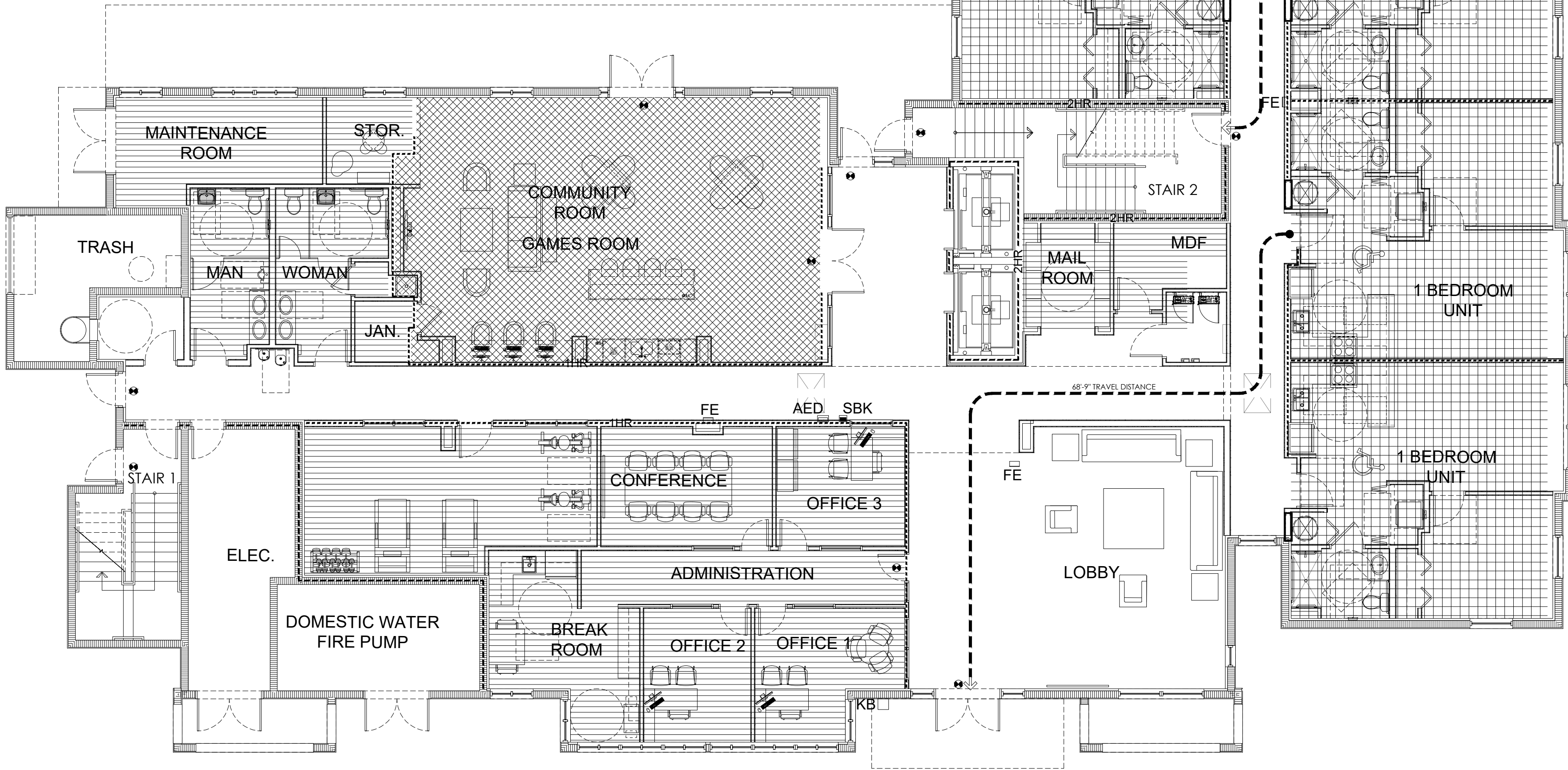
OCCUPANCY LEGEND

	BUSINESS GROUP B
	ASSEMBLY GROUP A-3
	RESIDENTIAL GROUP R-2

FIRST FLOOR LIFE SAFETY PLAN

1/8" = 1'-0"

0 4' 8'



GHA
GALLO HERBERT ARCHITECTS
1311 W NEWPORT CENTER DRIVE DEERFIELD BEACH, FLORIDA 33442
P.H. 954.794.0300 F.X. 954.794.0301

AA26001731

SEAL

WILLIAM J. GALLO FL AR0008440

WILLIAM J. GALLO FL AR0008440
BRIAN P. HERBERT FL AR0015474

BRIAN P. HERBERT FL AR0015474

PROJECT

90 UNITS
ASPIRE 1650

NW 30rd AVE - BLOUNT Rd.
POMPANO BEACH, FLORIDA

OWNER

REVISIONS

No.	Description	Date

PROJECT STATUS

AAC

DATE

10-03-2025

PROJECT NUMBER

49-2023

SCALE

AS SHOWN

DRAWN BY

CMR

CHECKED BY

BPH

DRAWING TITLE

LIFE SAFETY PLAN

DRAWING NUMBER

PZ25- 12000022

11/19/2025

101